

Drought: Parks & River Recreation Update



sonomacountyparks.org



REGIONAL PARKS
SONOMA
COUNTY



Legend:

-  Swimming/wading
-  Lifeguard on duty (summer only)
-  Hand boat launch
-  Vehicular boat launch
-  Fishing
-  Life jacket loan station (summer only)
-  Picnic tables
-  Restroom
-  Accessible areas (see website for details)
-  Hiking/walking

Guerneville River Park
13811 Hwy. 116, Guerneville

- 
- 
- 
- 
- 

Sunset Beach River Park
11403 River Road, Forestville

- 
- 
- 
- 
- 
- 

Riverfront Regional Park
7821 Eastside Road, Healdsburg

- 
- 
- 
- 
- 
- 

Cloverdale River Park
31820 McCray Road, Cloverdale

- 
- 
- 
- 
- 
- 

Del Rio Woods
2668 S. Fitch Mountain Road, Healdsburg

- 
- 
- 
- 
- 
- 



Healdsburg Veterans Memorial Beach
13839 Old Redwood Hwy, Healdsburg

- 
- 
- 
- 
- 
- 

Steelhead Beach Regional Park
9000 River Road, Forestville

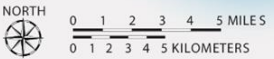
- 
- 
- 
- 
- 
- 

Wohler Bridge Fishing Access
9765 Wohler Road, Forestville
Open Oct. 1 - May 15

- 
- 
- 
- 
- 

Forestville River Access
10584 River Drive, Forestville

- 
- 
- 
- 



SonomaCountyParks.org



REGIONAL PARKS
SONOMA COUNTY





Strategies to make your river experience safe and enjoyable:

- Beach parking lots can fill by 10 a.m. Have a “Plan B” destination in mind in case a parking lot is full.
- Arrive early in the morning or later in the day for the best chance of finding parking.
- Park in designated parking spots and avoid parking in residential neighborhoods.
- Pack out your trash – including food waste, toilet paper, fishing line, rafts and tubes.
- If floating or paddling, check river travel times.
- Be prepared for changes in the weather.
- Dogs on leash OK, and pack out waste.
- River conditions change every year.

