

Sonoma County Fire Prevention Services and Resources

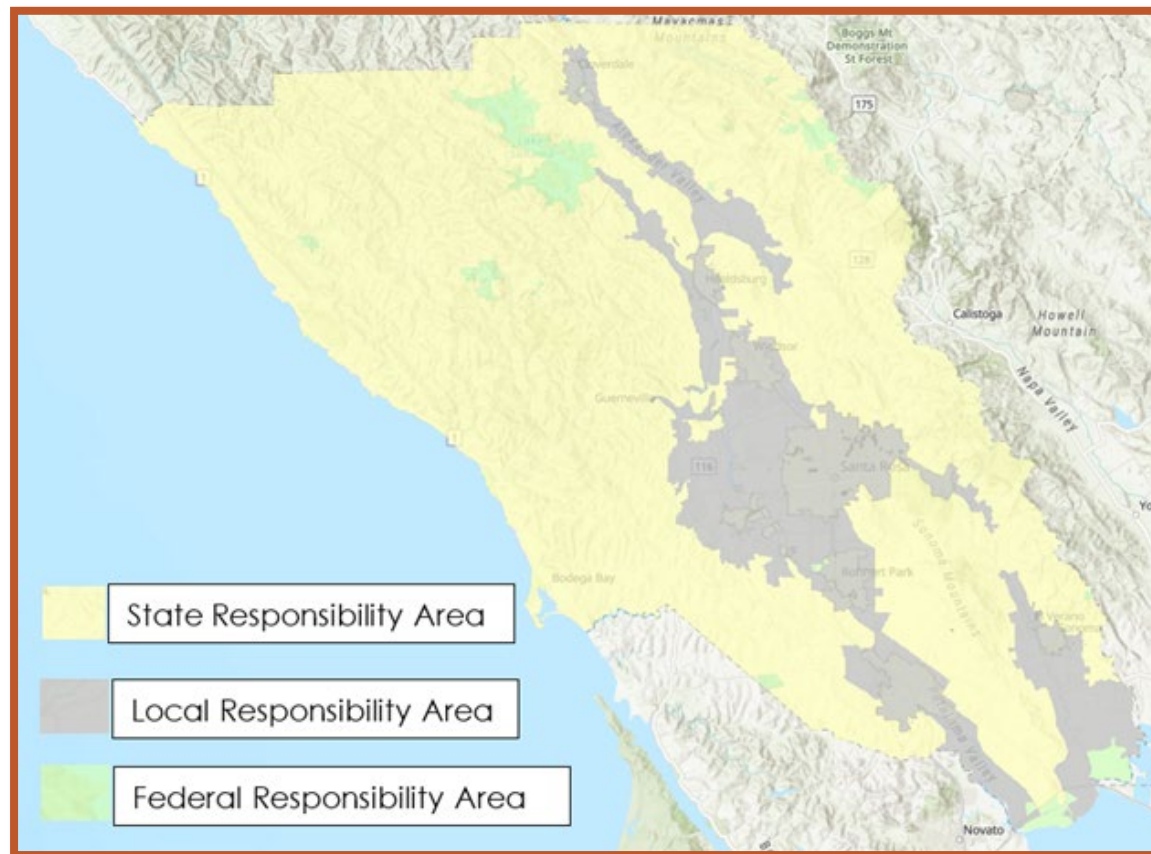


Agenda

- Defensible Space Inspections
- Curbside Chipper Program
- Vegetation Management Grant Programs
- Resources

Defensible Space Inspections

- Maintaining Defensible Space is an important part in protecting Sonoma County.
- Regulations vary by which jurisdiction is responsible:
 - Local Responsibility Areas
 - State Responsibility Areas (includes municipalities)
 - Federal Responsibility Areas
- It is every property owner's responsibility to comply with their area's regulations.
- Complaints to an area about Defensible Space, visit permitsonoma.org/vegetationcomplaint.



(Free) Curbside Chipper Program

- Created and funded by Permit Sonoma Fire Prevention Division.
- Program begins in April and ends in November.
- Services are available to residents in unincorporated areas of Sonoma County.
- Application available online only*.

* Go to permitsonoma.org/chipperprogram to learn more about program guidelines **before** applying.



Vegetation Management Grant Programs



Wildfire Adapted Sonoma County

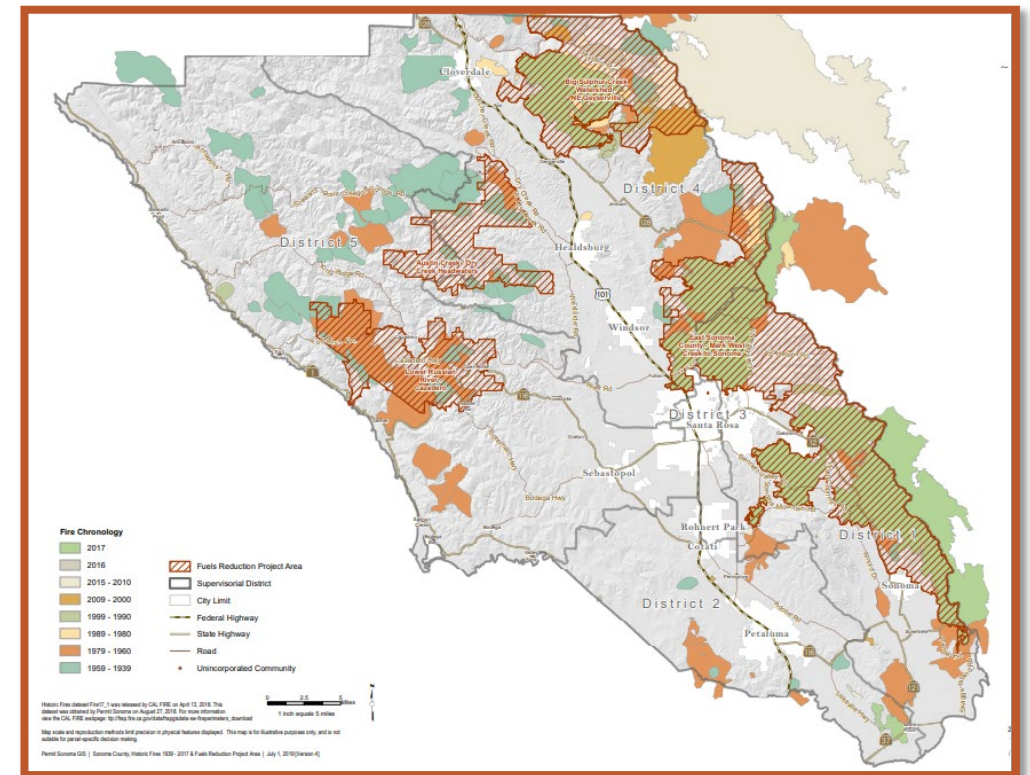
- Grant program that uses community-scaled, risk-reducing techniques to reduce a wildfire's potential for home destruction.
- Utilizing Defensible Space assessments to educate owners about creating defensible space and hardening homes against heat and embers of wildfire.
- Cost-sharing incentives available on a first-come, first-served basis in the pre-selected [project areas](#).

For more program information, visit [SoCoAdapts.org](https://www.sonomacounty.ca.gov/programs-services/wildfire-adapted-sonoma-county).



Hazardous Fuels Reduction Grant

- A two-phased program -
 - **Phase 1:** site identification, outreach, coordination, and project planning (complete by Spring 2024).
 - **Phase 2:** implement selected fuels reduction treatments (begins in mid-2024 and dependent on release of FEMA funds).
- Designed to protect the lives and property of County residents while improving forest health and wildfire resilience in the County's wildland areas.
- Grant Project will reduce the County's wildfire risk by performing large-scale vegetation management on pre-selected project areas.



Resources



Educational Resources

- **Fire Safe Sonoma** ([FireSafeSonoma.org](https://www FiresafeSonoma.org)) is a 501(c)(3) nonprofit whose mission is to increase awareness of wildfire issues in our county. Fire Safe Sonoma acts as a liaison between local communities and agencies, actively seeks grant funding for wildfire-related projects, and manages grant programs.
- **CAL FIRE's** [ReadyforWildfire.org](https://www ReadyforWildfire.org) offers critical information about wildfire preparedness, home hardening, defensible space, and how to prepare for evacuation.

Additional Advice & Resources

- **University of California Cooperative Extension** (cesonoma.ucanr.edu) addresses resiliency or agriculture and natural resources through climate smart strategies.
- **Sonoma Resource Conservation District** (sonomarcd.org) and Gold Ridge Resource Conservation District (goldridgercd.org) aids local property owners within their jurisdictions.
- **Sonoma County Forest Working Group** (sonomaforests.org) works to perpetuate sustainable, healthy, and diverse forests, woodlands, and watersheds across the Sonoma County landscape, and to be a catalyst, source of information, and point of contact for forestland owners.
- **Local Fire Departments and Districts** are a great resource for fire prevention and response in your area. View a list of local fire districts at SoCoEmergency.org.
- **HALTER Project** (halterproject.org) is a grassroots program, which helps individuals, agencies, and organizations to support efforts of communities and agencies to train and prepare for a ready response to, and the care of, animals in everyday emergencies and large-scale disasters.
- The **Community Wildfire Protection Plan Hub Site** (<https://arcg.is/mzC4L0>) is a great resource to learn about wildfire risk in Sonoma County. View detailed Wildfire Risk Index (WRI) and Wildfire Hazard Index maps, wildfire history maps, and topographic maps that can help you understand risk. You can also review wildfire risk reduction projects that have been proposed throughout the county.

Thank you!



Website: permitsonoma.org/divisions/firepreventionandhazmat
Email: FirePrevention@sonoma-county.org | **Phone:** (707) 565-2361